



JUNE 20, 2019

Maine Public District
2019 Transmission Rate Filing

Welcome

This meeting is scheduled per the MPD OATT (Open Access Transmission Tariff) Attachment J – Section III B1.

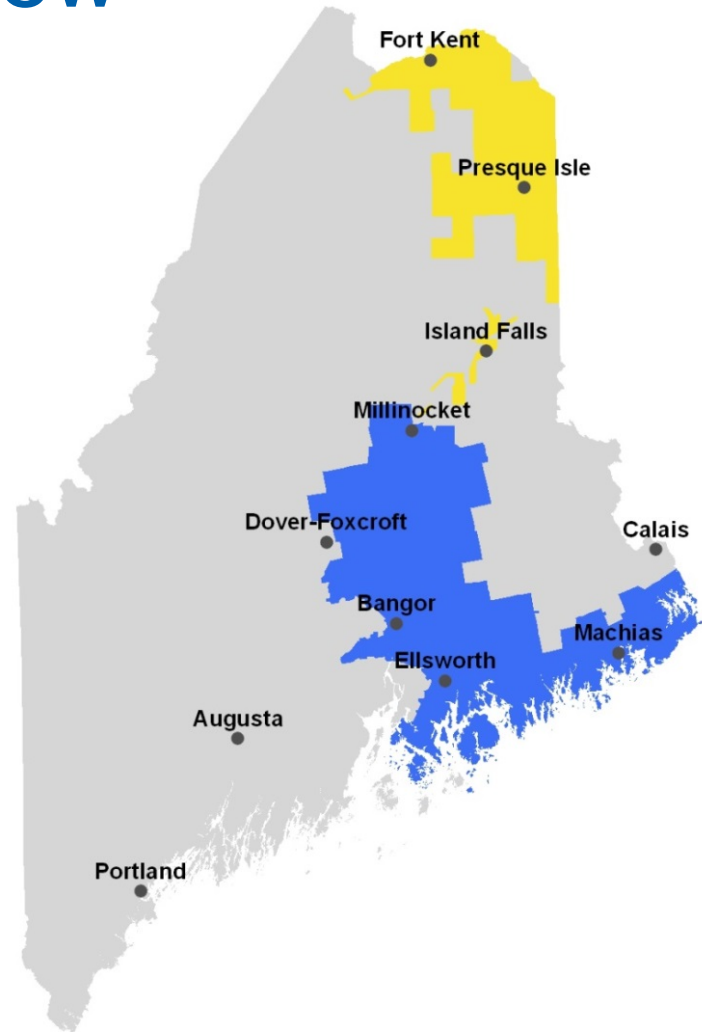
“Between 45 Days and 60 Days after the Publication Date, Transmission Provider will hold an open meeting to discuss the Annual Update (“Customer Meeting”).”

Agenda

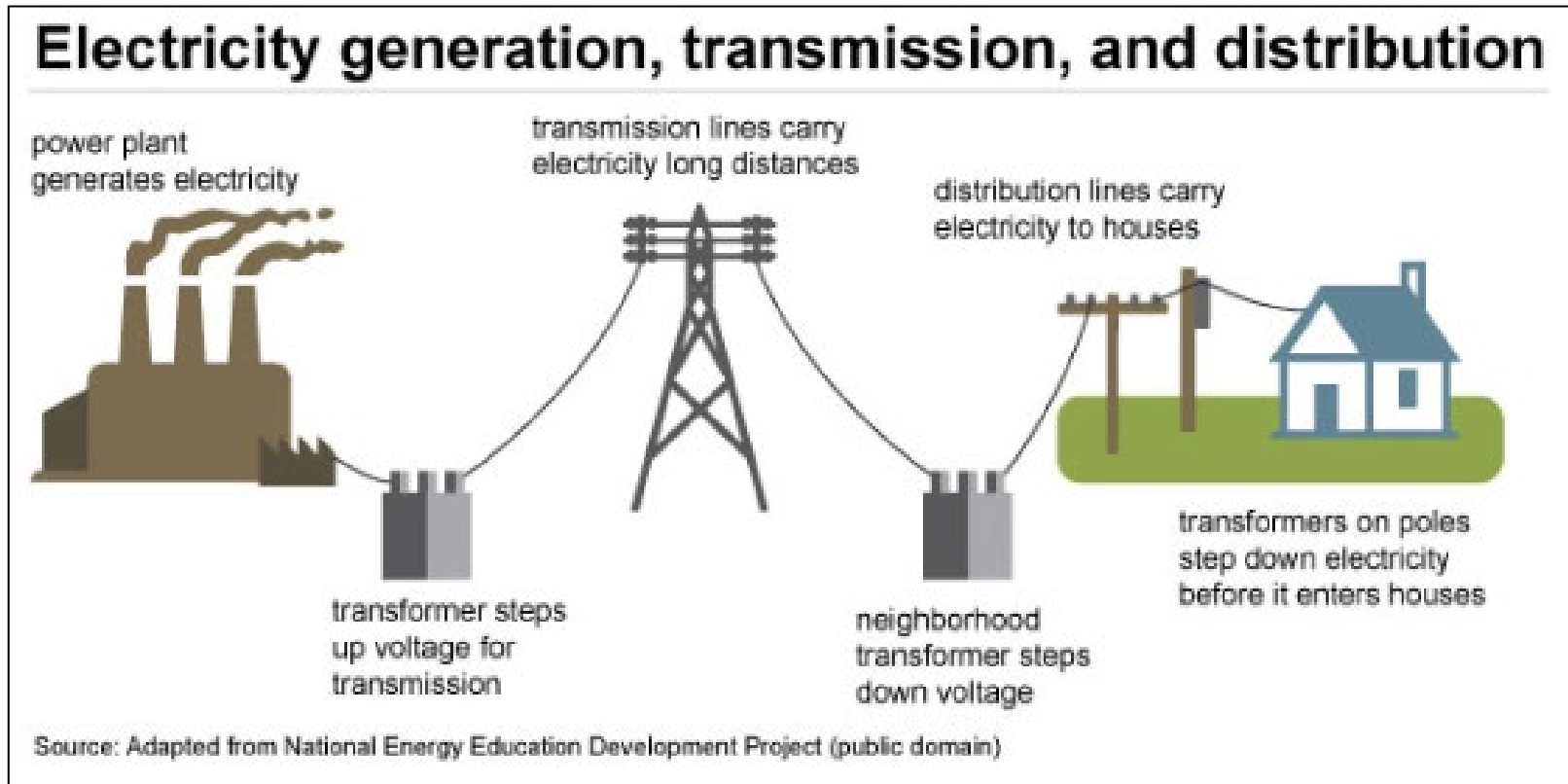
- Welcome & introductions (Gina LeBlanc-Eggert)
- Safety message (Gina LeBlanc-Eggert)
- Emera Maine overview & rate filings effective July 1 (Lisa Martin)
- Transmission rate filing overview (Tim Olesniewicz)
- Discussion and questions (All)

Emera Maine Overview

Emera Maine by the Numbers*	
<i>Service Territory</i>	10,400 sq miles
<i>Customers</i>	159,000
<i>Employees</i>	406
<i>Transmission Lines</i>	1,265 miles
<i>Primary Distribution Lines</i>	6,090 miles
<i>Residential Revenue</i>	52%
<i>Commercial Revenue</i>	40%
<i>Industrial Revenue</i>	9%



Transmission and Distribution



Emera Maine delivers electricity supplied by others

Rate Changes Effective July 1, 2019 for Residential Customer using 500 kWh/month

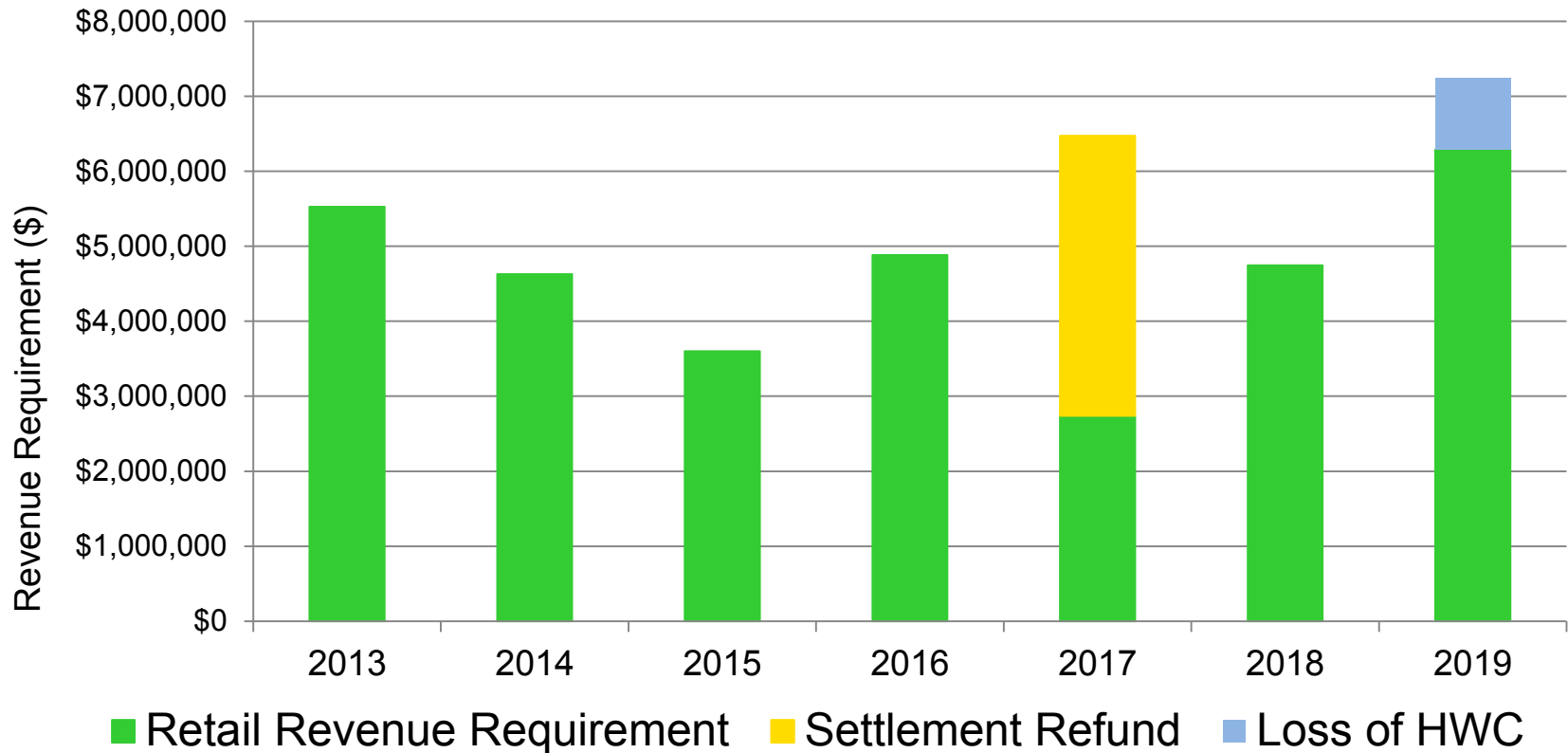
Category	New Rate	Previous Rate	Explanation
Transmission	\$5.86 / month \$0.011725 / kWh	\$4.63 / month \$0.009267 / kWh	<ul style="list-style-type: none"> • Lower wheeling credits due to biomass generator closures & discount (+\$1m) • Replaced poles and other infrastructure due to poor condition (+\$484,000) • 2018 Federal Tax Cuts (-\$196,000)
Stranded Cost	(\$0.33) / month (\$0.000651) / kWh	(\$0.52) / month (\$0.001047) / kWh	<ul style="list-style-type: none"> • Pass-through of legacy costs due deregulation & State energy policy (contracts) • Reduces some customers' bills
Conservation	\$0.83 / month \$0.00166 / kWh	\$1.22 / month \$0.002430 / kWh	<ul style="list-style-type: none"> • Pass-through charge to fund demand side management programs • Administered by Efficiency Maine Trust
Distribution	\$31.17 / month \$0.062334 / kWh	\$31.17 / month \$0.062334 / kWh	<ul style="list-style-type: none"> • No change
TOTAL without supply:	\$37.53 / month \$0.075 / kWh	\$36.50 / month \$0.073 / kWh	<ul style="list-style-type: none"> • Approximately \$12.36 / year

Transmission Rate Bill Change - Monthly

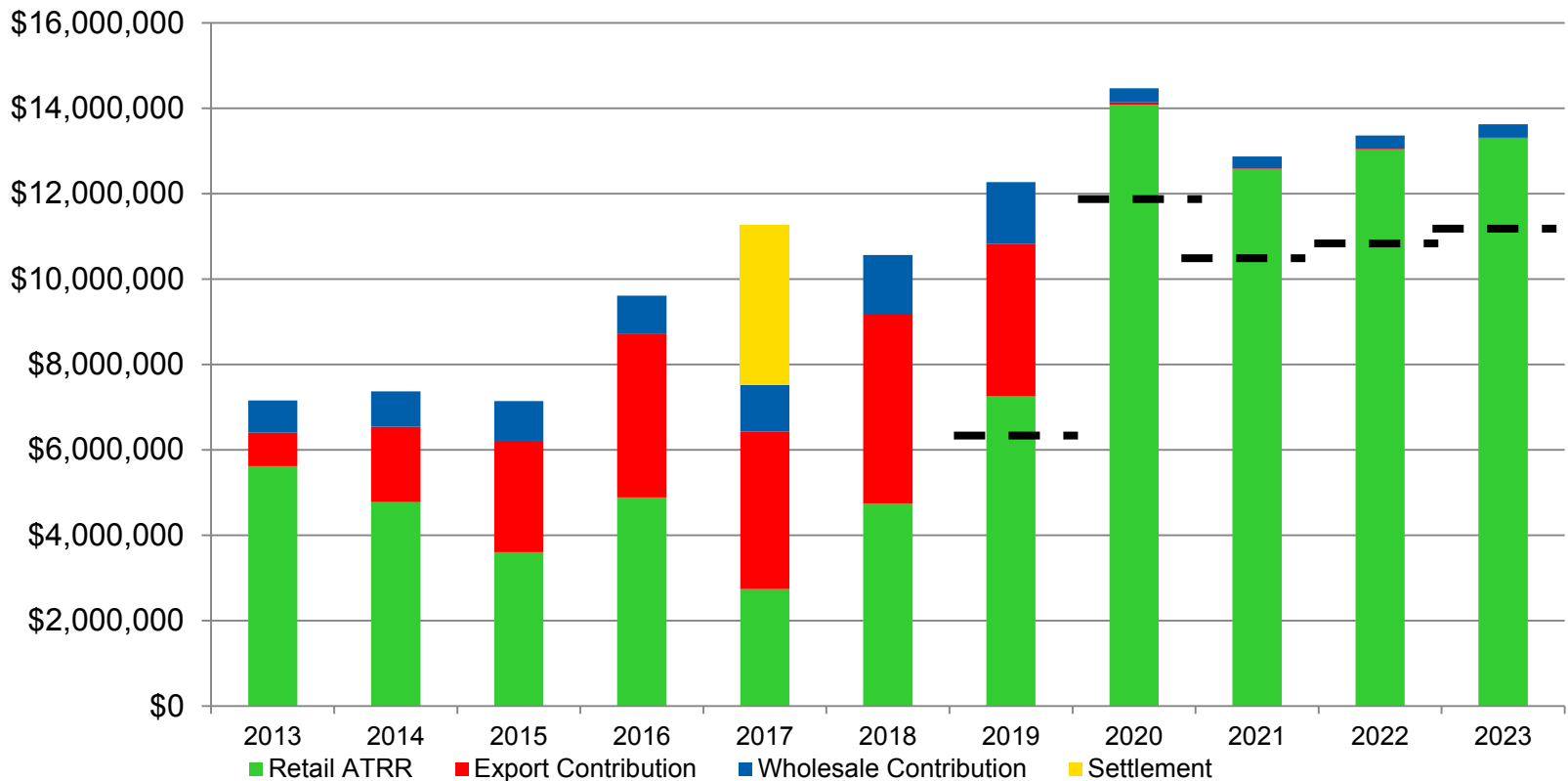
July 1 2019 Rate Change For Transmission Rates Alone

Customer Class	Sample Usage	2019 Change
Residential	500 kWh	\$1.26
General (C)	1000 kWh	\$2.98
Medium (ES)	50 kW – 250 kW	\$50 - \$270
Medium (EP)	100 kW – 350 kW	(\$70 - \$250)
Large (EP-T)	500 kW – 1,500 kW	\$460 - \$1,380
Large (ES-T)	500 kW – 750 kW	\$150 - \$230
Trans (ST)	1,000 kW – 2,500 kW	\$1,140 - \$2,840
Trans (HT)	1,000 kW – 2,500 kW	\$990 – \$2,490

2019 MPD Retail Revenue Requirement

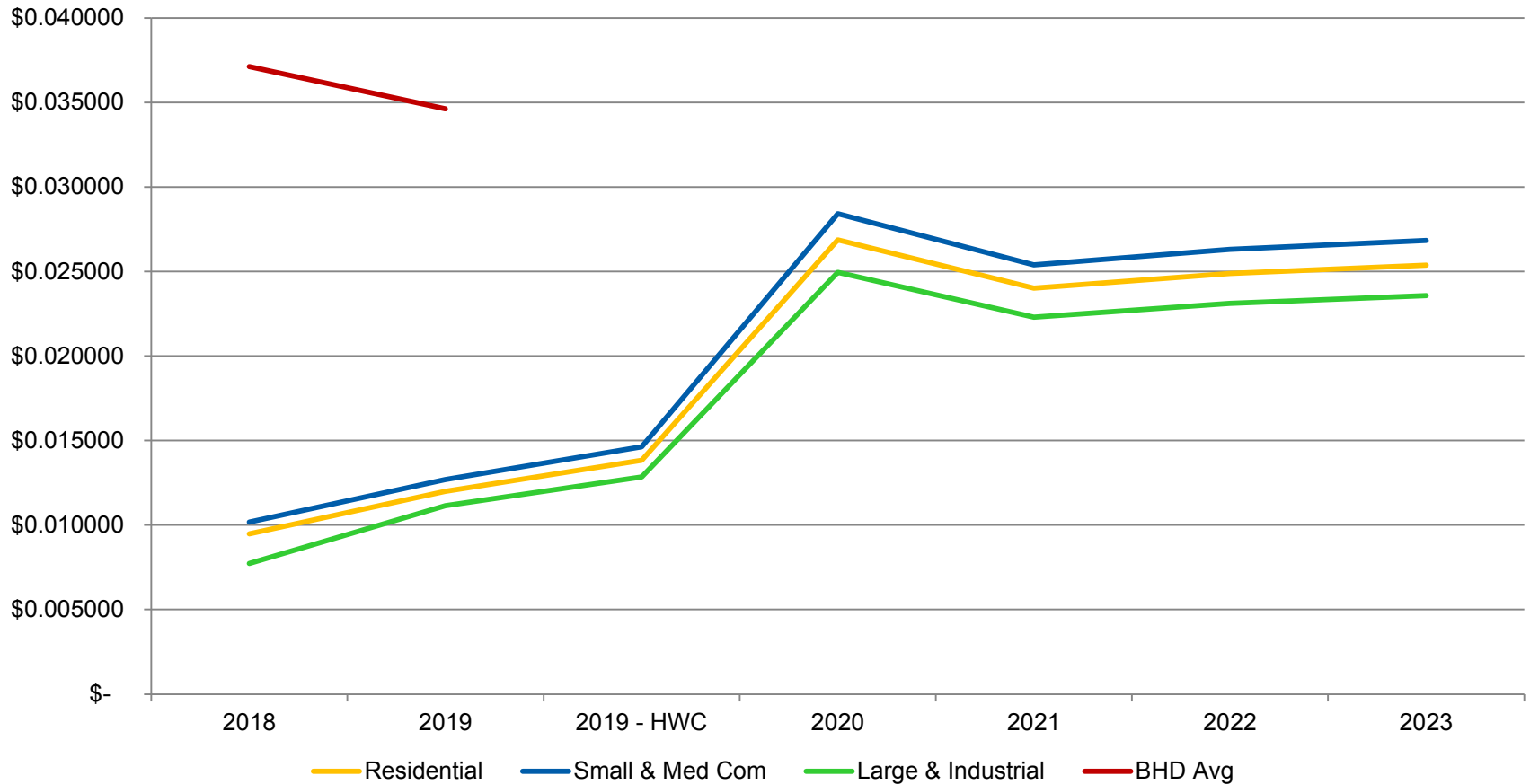


Forecast of future transmission revenue requirement Loss of Wheeling and HWC



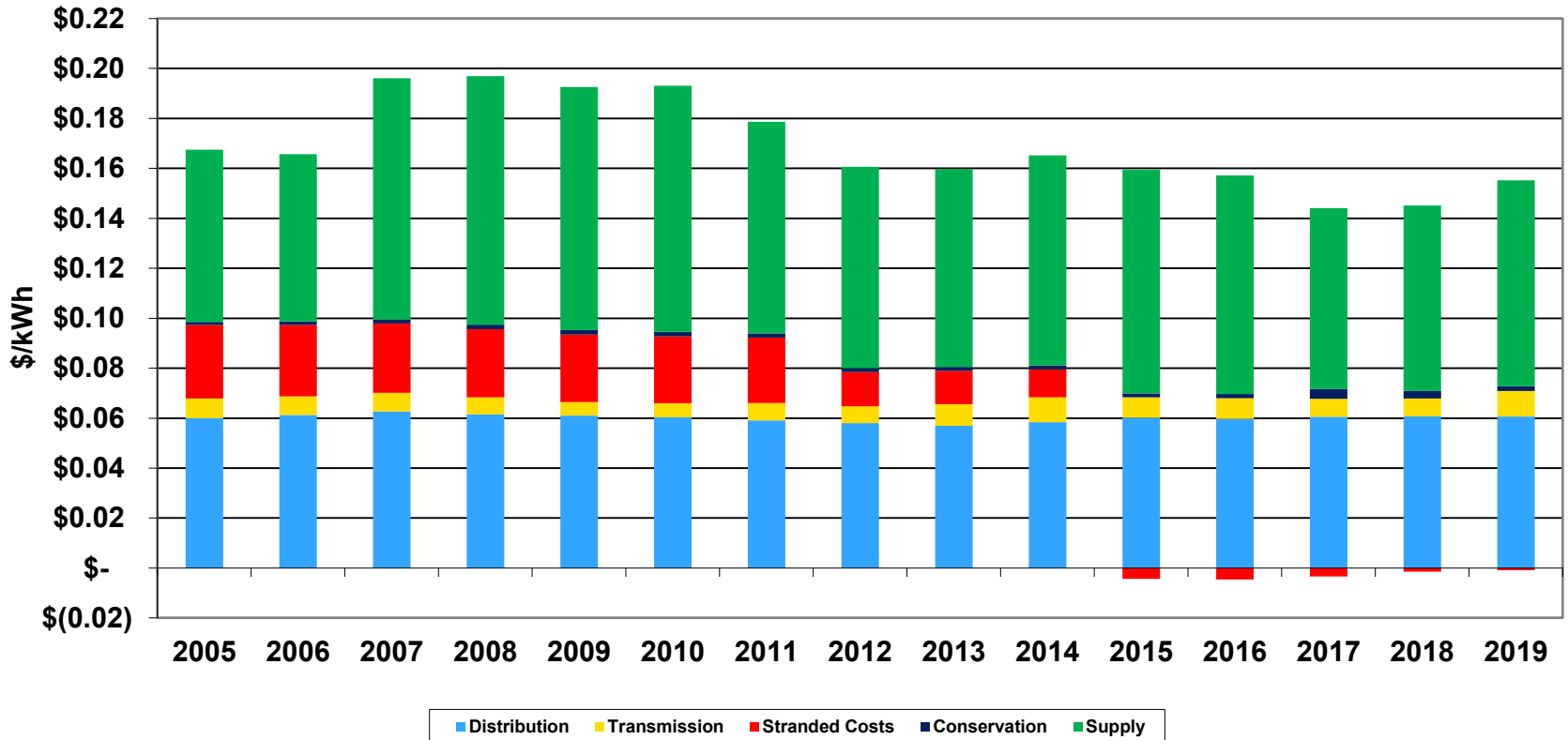
Dotted line for 2019-2023 – effect of Houlton Water loss of load (no wheeling)

Transmission Rate Averages (cents/kWh)



MPD Residential Rate History

**Rate Components for Basic Residential Service
2005-2019 Calendar Years**
(amounts expressed in 2018 real dollars)



Delivery Rate Bill Impact - Monthly

July 1 2019 Rate Change

For Transmission, Conservation & Stranded Cost

Customer Class	Sample Usage	2019 Change
Residential	500 kWh	\$1.07
General (C)	1000 kWh	\$2.60
Medium (ES)	50 kW – 250 kW	\$45 - \$235
Medium (EP)	100 kW – 350 kW	(\$85 - \$300)
Large (EP-T)	500 kW – 1,500 kW	\$385 - \$1,160
Large (ES-T)	500 kW – 750 kW	\$60 - \$90
Trans (ST)	1,000 kW – 2,500 kW	\$1,295 - \$3,235
Trans (HT)	1,000 kW – 2,500 kW	\$1,150 – \$2,880

Questions

- Thank you.